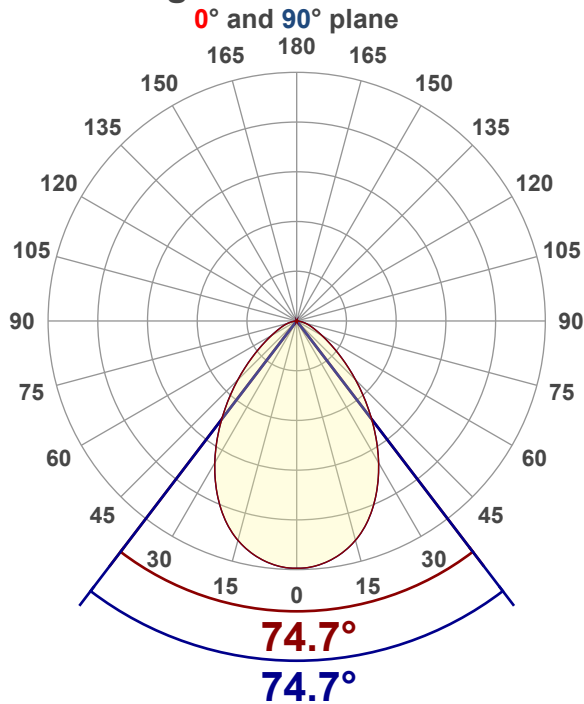


Light efficiency:**92 Lumen/Watt****Color temperature:****3003 K****Light quality:****CRI:94.6, R_g:92.2, R_f:101.0****P: 2 / V: - / F: 2****Output: 998 lm****Peak: 626 cd****Power: 10.9 W****Voltage: 120 V****Current: 0.093 A****PF: 0.98****THD: 8.31 %****Angular Distribution****Product name:****SLMB4-12W-CCT-XX - 3000K****Test Date:****11/21/2025****Beam Angle (50% of the brightness of the centre):****74.7°****Field Angle (10% of the brightness of the centre):****124.5°****Cut Off Angle (2.5% of the brightness of the centre):****157.2°****Beam Details****measured at centre of beam*

| Mounting Height (feet)\(meter) | Lux* | Footcandles* | Beam width (feet) / (meter) |
|-----------------------------------|--------|--------------|--------------------------------|
| 4 ft / 1.2 m | 421 lx | 39 fc | 6.1 ft / 1.9 m |
| 8 ft / 2.4 m | 105 lx | 10 fc | 12.2 ft / 3.7 m |
| 12 ft / 3.7 m | 47 lx | 4 fc | 18.3 ft / 5.6 m |
| 16 ft / 4.9 m | 26 lx | 2 fc | 24.4 ft / 7.4 m |
| 20 ft / 6.1 m | 17 lx | 2 fc | 30.5 ft / 9.3 m |

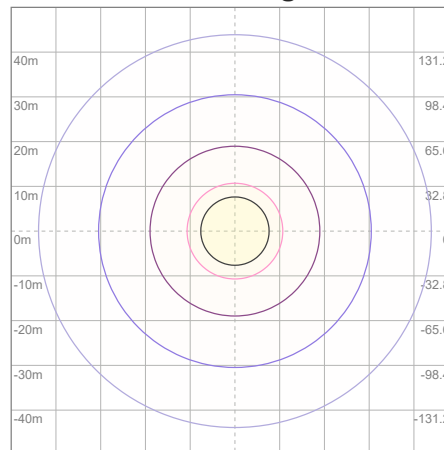
Beam center

Photometric Testing Report

Zonal Lumen Summary

| Zone | Lumen | %Luminaire |
|--------|-------|------------|
| 0-30 | 439 | 43.99% |
| 0-40 | 654 | 65.53% |
| 0-60 | 915 | 91.68% |
| 60-90 | 82.4 | 8.26% |
| 70-100 | 30.5 | 3.06% |
| 90-120 | 0.123 | 0.01% |
| 0-90 | 997 | 99.90% |
| 90-180 | 0.514 | 0.05% |
| 0-180 | 998 | 100.00% |

ISO Lux Diagram



| | |
|----------------|----------|
| Lux at center: | 67 lx |
| 3% | 2.01 lx |
| 5% | 3.35 lx |
| 10% | 6.70 lx |
| 30% | 20.10 lx |
| 50% | 33.50 lx |

Conditions:

Number of planes: 8

Lux distribution on a surface when lamp is mounted at 3.05 meters from the surface.

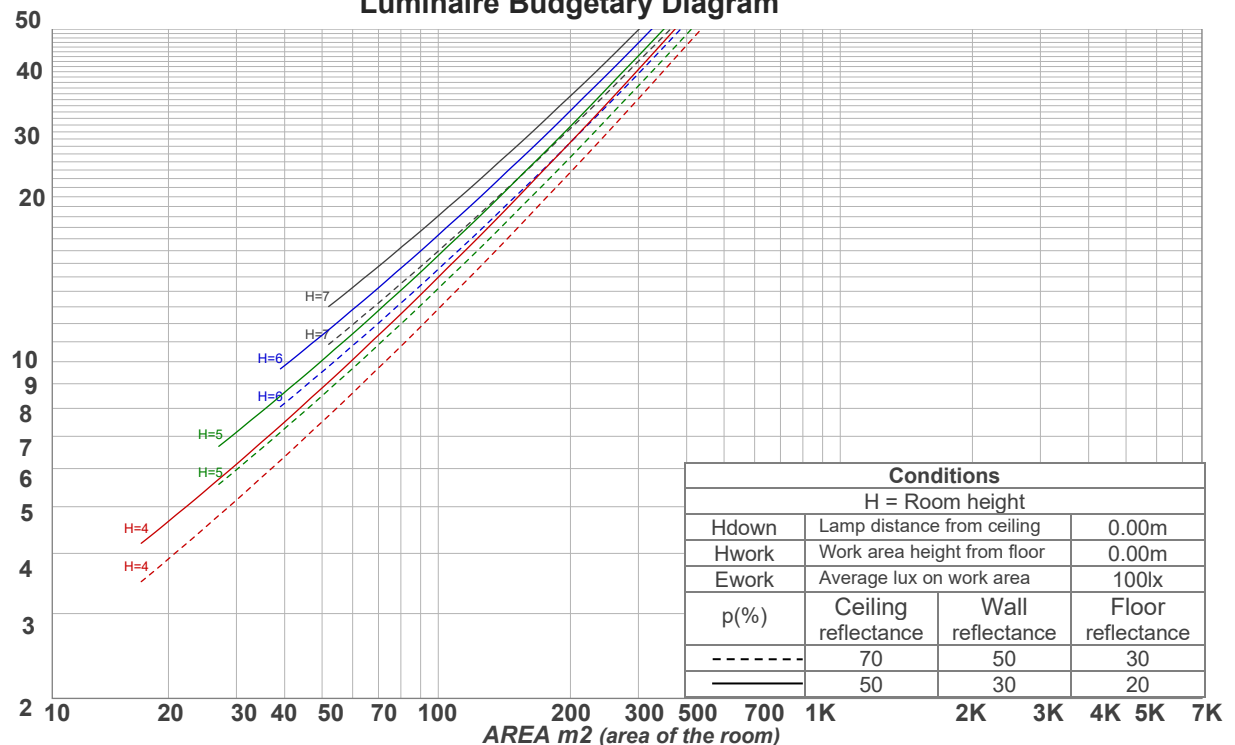
Mounting height: 3.05 meters (10 feet)

Coefficients of Utilization

| Ceiling reflectance | 80 | | | | 70 | | | | 50 | | | 30 | | | 10 | | | 0 |
|---------------------|--|-----|-----|-----|-----|-----|-----|-----|-----|-----|-----|-----|-----|-----|-----|-----|-----|-----|
| Wall reflectance | 70 | 50 | 30 | 10 | 70 | 50 | 30 | 10 | 50 | 30 | 10 | 50 | 30 | 10 | 50 | 30 | 10 | 0 |
| Floor reflectance | 20 | 20 | 20 | 20 | 20 | 20 | 20 | 20 | 20 | 20 | 20 | 20 | 20 | 20 | 20 | 20 | 20 | 0 |
| RCR | (RCR: Room Cavity Ratio) Room Values are expressed as percentage of Lumens delivered to the task surface | | | | | | | | | | | | | | | | | |
| 0 | 119 | 119 | 119 | 119 | 116 | 116 | 116 | 116 | 111 | 111 | 111 | 106 | 106 | 106 | 102 | 102 | 102 | 100 |
| 1 | 111 | 108 | 104 | 101 | 109 | 105 | 102 | 100 | 101 | 99 | 97 | 97 | 95 | 94 | 94 | 92 | 91 | 89 |
| 2 | 103 | 97 | 91 | 87 | 101 | 95 | 90 | 86 | 92 | 88 | 84 | 89 | 85 | 82 | 86 | 83 | 80 | 78 |
| 3 | 96 | 88 | 81 | 76 | 94 | 86 | 80 | 75 | 83 | 78 | 74 | 81 | 76 | 73 | 78 | 75 | 71 | 69 |
| 4 | 89 | 80 | 72 | 67 | 87 | 78 | 72 | 66 | 76 | 70 | 65 | 74 | 69 | 65 | 72 | 67 | 64 | 62 |
| 5 | 83 | 73 | 65 | 59 | 82 | 72 | 64 | 59 | 70 | 63 | 59 | 68 | 62 | 58 | 66 | 61 | 57 | 56 |
| 6 | 78 | 67 | 59 | 53 | 76 | 66 | 58 | 53 | 64 | 58 | 53 | 62 | 57 | 52 | 61 | 56 | 52 | 50 |
| 7 | 73 | 61 | 54 | 48 | 71 | 61 | 53 | 48 | 59 | 53 | 48 | 58 | 52 | 48 | 56 | 51 | 47 | 46 |
| 8 | 68 | 57 | 49 | 44 | 67 | 56 | 49 | 44 | 55 | 48 | 44 | 54 | 48 | 44 | 53 | 47 | 43 | 42 |
| 9 | 64 | 53 | 45 | 40 | 63 | 52 | 45 | 40 | 51 | 45 | 40 | 50 | 44 | 40 | 49 | 44 | 40 | 38 |
| 10 | 61 | 49 | 42 | 37 | 60 | 49 | 42 | 37 | 48 | 41 | 37 | 47 | 41 | 37 | 46 | 41 | 37 | 35 |

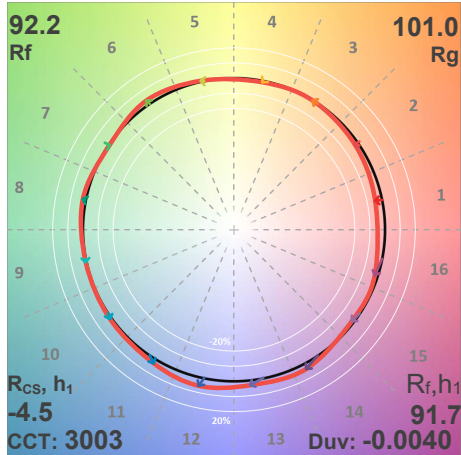
LAMPS (number of lamps)

Luminaire Budgetary Diagram

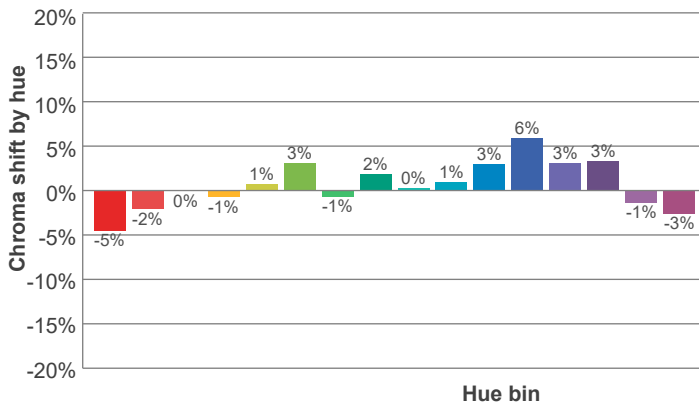
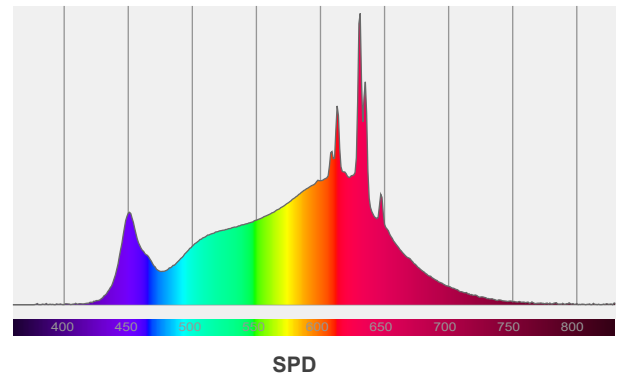
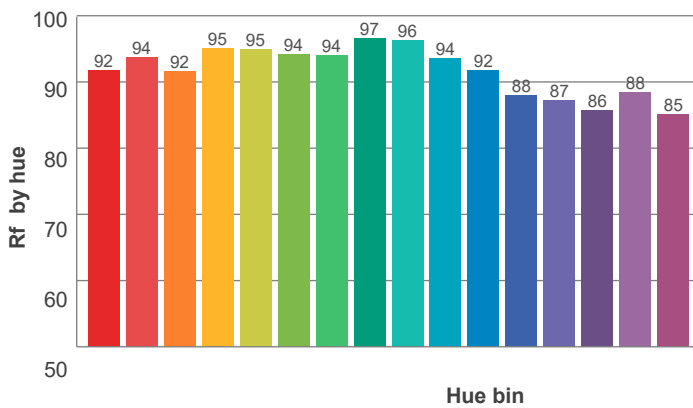
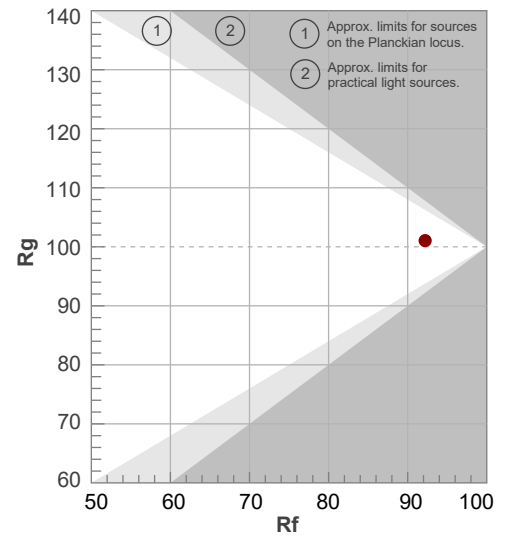


ANSI/IES TM-30-18

P: 2 / V: - / F: 2



| Hue Bin | R _f | Shifts (%) | |
|---------|----------------|------------|------|
| | | Chroma | Hue |
| 1 | 92 | -5% | 0% |
| 2 | 94 | -2% | 3% |
| 3 | 92 | 0% | 4% |
| 4 | 95 | -1% | 0% |
| 5 | 95 | 1% | 2% |
| 6 | 94 | 3% | 1% |
| 7 | 94 | -1% | -1% |
| 8 | 97 | 2% | 0% |
| 9 | 96 | 0% | 2% |
| 10 | 94 | 1% | 4% |
| 11 | 92 | 3% | 5% |
| 12 | 88 | 6% | -3% |
| 13 | 87 | 3% | -9% |
| 14 | 86 | 3% | -11% |
| 15 | 88 | -1% | -7% |
| 16 | 85 | -3% | -11% |



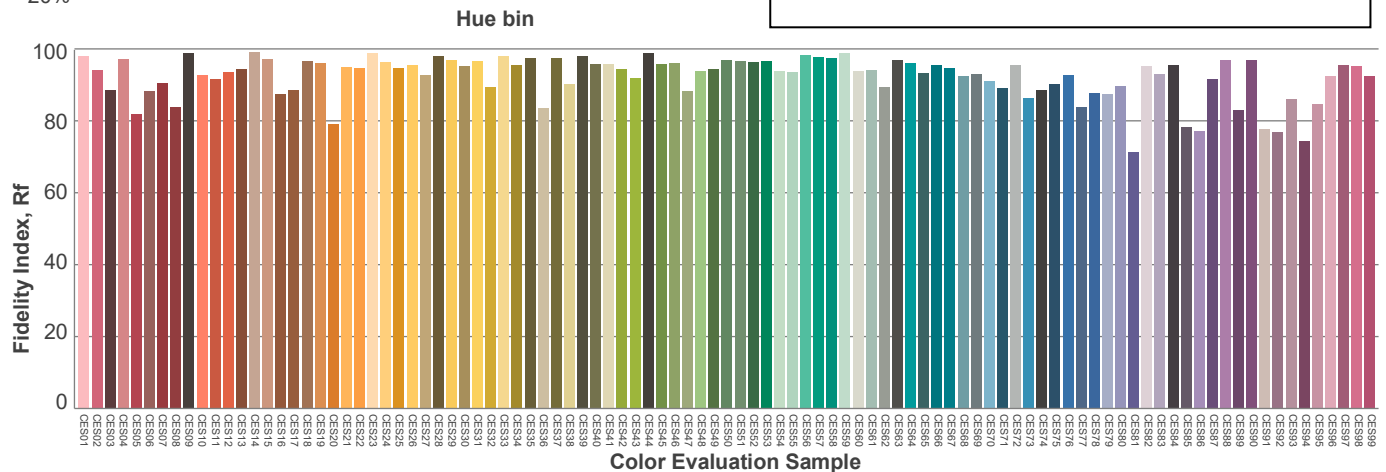
Red: 31.2%, Power=4.8mW

Blue: 10.5%, Power=5.6mW

Green: 26.7%, Power=11.5mW

UVA: 0%, Power=0.0mW

Dominant Wavelength: 585nm

1st Peak Wavelength: 631nm2nd Peak Wavelength: 613nm

Glare Evaluation According to UGR

| | | | | | | | | | | | |
|---|-----|---|------|------|------|------|---|------|------|------|------|
| p Ceiling | | 70 | 70 | 50 | 50 | 30 | 70 | 70 | 50 | 50 | 30 |
| p Walls | | 50 | 30 | 50 | 30 | 30 | 50 | 30 | 50 | 30 | 30 |
| p Floor | | 20 | 20 | 20 | 20 | 20 | 20 | 20 | 20 | 20 | 20 |
| Room size X Y | | Viewing direction at right angles to lamp axis | | | | | Viewing direction parallel to lamp axis | | | | |
| 2H | 2H | 24.7 | 25.7 | 24.9 | 26.0 | 26.2 | 24.7 | 25.7 | 24.9 | 26.0 | 26.2 |
| | 3H | 25.2 | 26.2 | 25.6 | 26.4 | 26.6 | 25.2 | 26.2 | 25.6 | 26.4 | 26.6 |
| | 4H | 25.4 | 26.4 | 25.8 | 26.6 | 26.9 | 25.4 | 26.4 | 25.8 | 26.6 | 26.9 |
| | 6H | 25.6 | 26.4 | 25.9 | 26.7 | 27.1 | 25.6 | 26.4 | 25.9 | 26.7 | 27.1 |
| | 8H | 25.6 | 26.4 | 25.9 | 26.7 | 27.1 | 25.6 | 26.4 | 25.9 | 26.7 | 27.1 |
| | 12H | 25.6 | 26.4 | 26.0 | 26.7 | 27.2 | 25.6 | 26.4 | 26.0 | 26.7 | 27.2 |
| 4H | 2H | 24.9 | 25.8 | 25.3 | 26.1 | 26.3 | 24.9 | 25.8 | 25.3 | 26.1 | 26.3 |
| | 3H | 25.6 | 26.4 | 26.0 | 26.7 | 27.2 | 25.6 | 26.4 | 26.0 | 26.7 | 27.2 |
| | 4H | 25.9 | 26.6 | 26.3 | 27.0 | 27.5 | 25.9 | 26.6 | 26.3 | 27.0 | 27.5 |
| | 6H | 26.1 | 26.8 | 26.6 | 27.1 | 27.5 | 26.1 | 26.8 | 26.6 | 27.1 | 27.5 |
| | 8H | 26.1 | 26.8 | 26.6 | 27.1 | 27.5 | 26.1 | 26.8 | 26.6 | 27.1 | 27.5 |
| | 12H | 26.1 | 26.7 | 26.6 | 27.1 | 27.6 | 26.1 | 26.7 | 26.6 | 27.1 | 27.6 |
| 8H | 4H | 26.0 | 26.6 | 26.5 | 27.0 | 27.3 | 26.0 | 26.6 | 26.5 | 27.0 | 27.3 |
| | 6H | 26.3 | 26.7 | 26.8 | 27.2 | 27.7 | 26.3 | 26.7 | 26.8 | 27.2 | 27.7 |
| | 8H | 26.4 | 26.8 | 26.9 | 27.3 | 27.9 | 26.4 | 26.8 | 26.9 | 27.3 | 27.9 |
| | 12H | 26.4 | 26.8 | 27.0 | 27.3 | 27.9 | 26.4 | 26.8 | 27.0 | 27.3 | 27.9 |
| 12H | 4H | 25.9 | 26.5 | 26.4 | 26.9 | 27.3 | 25.9 | 26.5 | 26.4 | 26.9 | 27.3 |
| | 6H | 26.3 | 26.7 | 26.8 | 27.2 | 27.9 | 26.3 | 26.7 | 26.8 | 27.2 | 27.9 |
| | 8H | 26.4 | 26.7 | 27.0 | 27.2 | 27.9 | 26.4 | 26.7 | 27.0 | 27.2 | 27.9 |
| Variation of the observer position for the luminaire distance S | | | | | | | | | | | |
| S = 1.0H | | 0.3 / -0.6 | | | | | 0.3 / -0.6 | | | | |
| S = 1.5H | | 1.1 / -1.3 | | | | | 1.1 / -1.3 | | | | |
| S = 2.0H | | 2.1 / -1.9 | | | | | 2.1 / -1.9 | | | | |
| Standard table | | n/a | | | | | n/a | | | | |
| Correction summand | | n/a | | | | | n/a | | | | |
| Corrected glare indices referring to 998 lm total luminous flux | | | | | | | | | | | |